

20# SOS

(Scaled 100% - ACTUAL SIZE)

PO#:

IMPRINT SIZE:

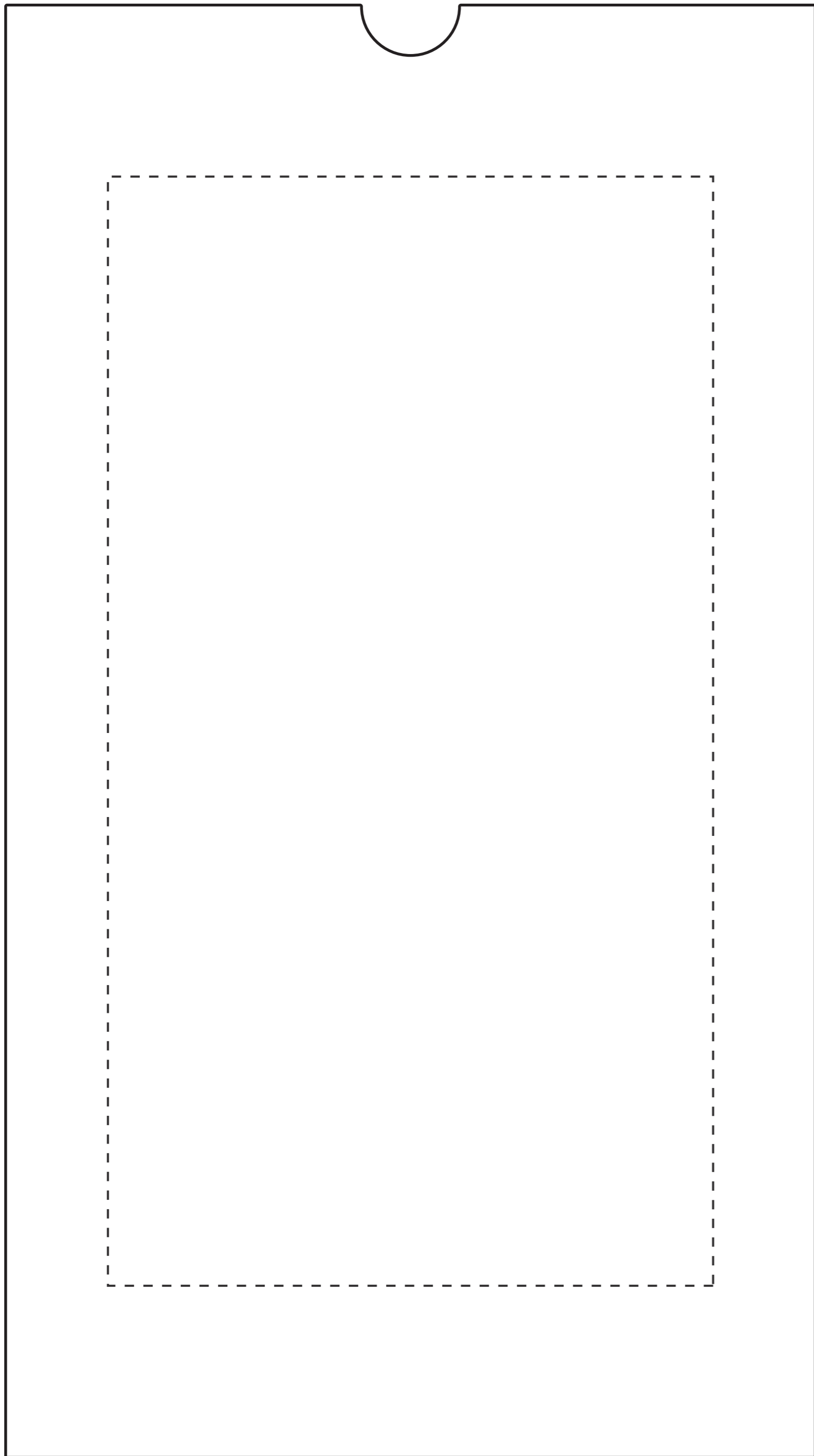
IMPRINT COLOR:

ITEM #: BRSP20

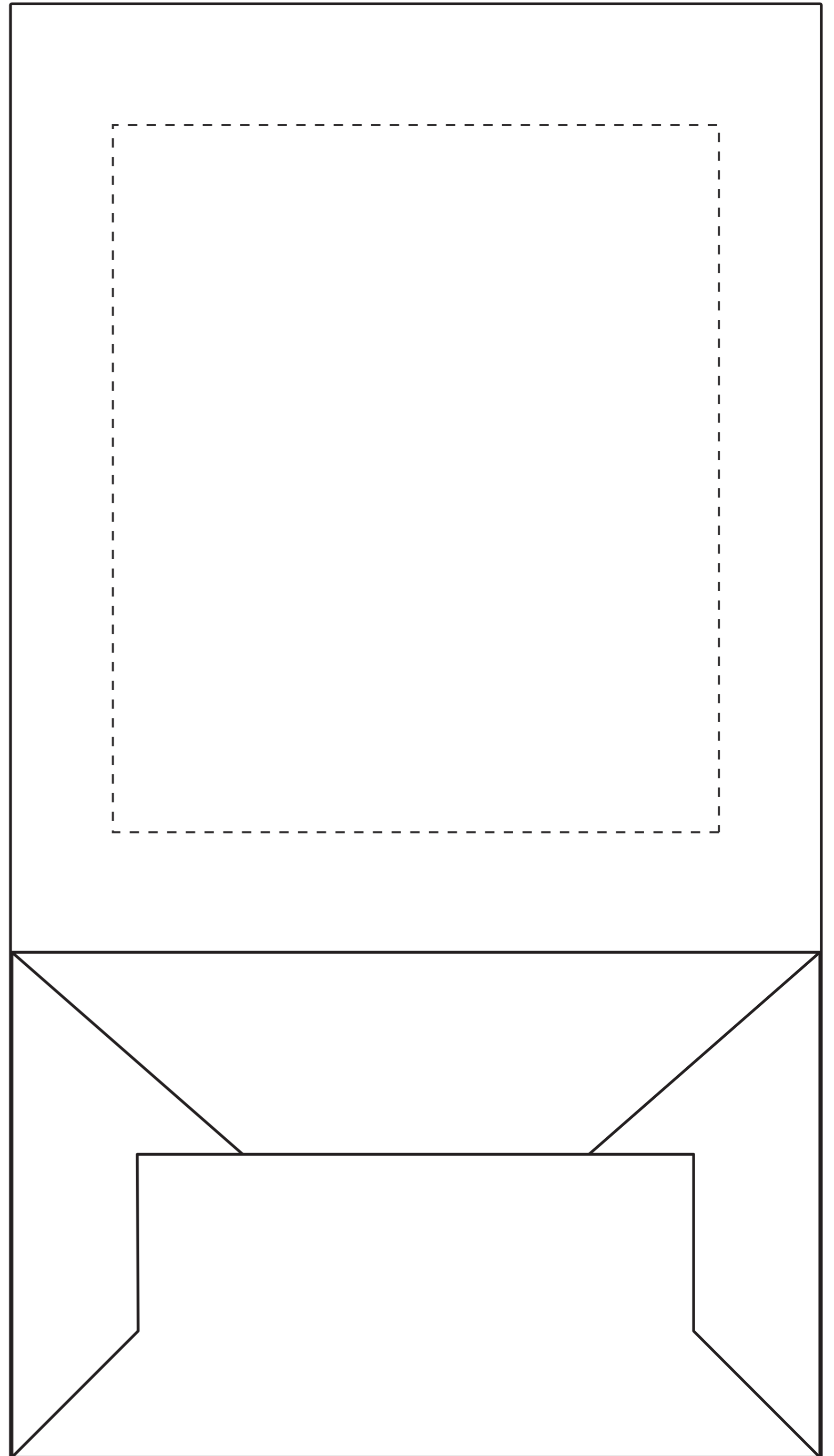
BAG SIZE: 8w x 5 x 14^{3/8}h

IMPRINT AREA: 6w x 11h (front)

6w x 7h (back)



(Front)



(Back)