

# 12# SOS

(Scaled 100% - ACTUAL SIZE)

PO#:

IMPRINT SIZE:

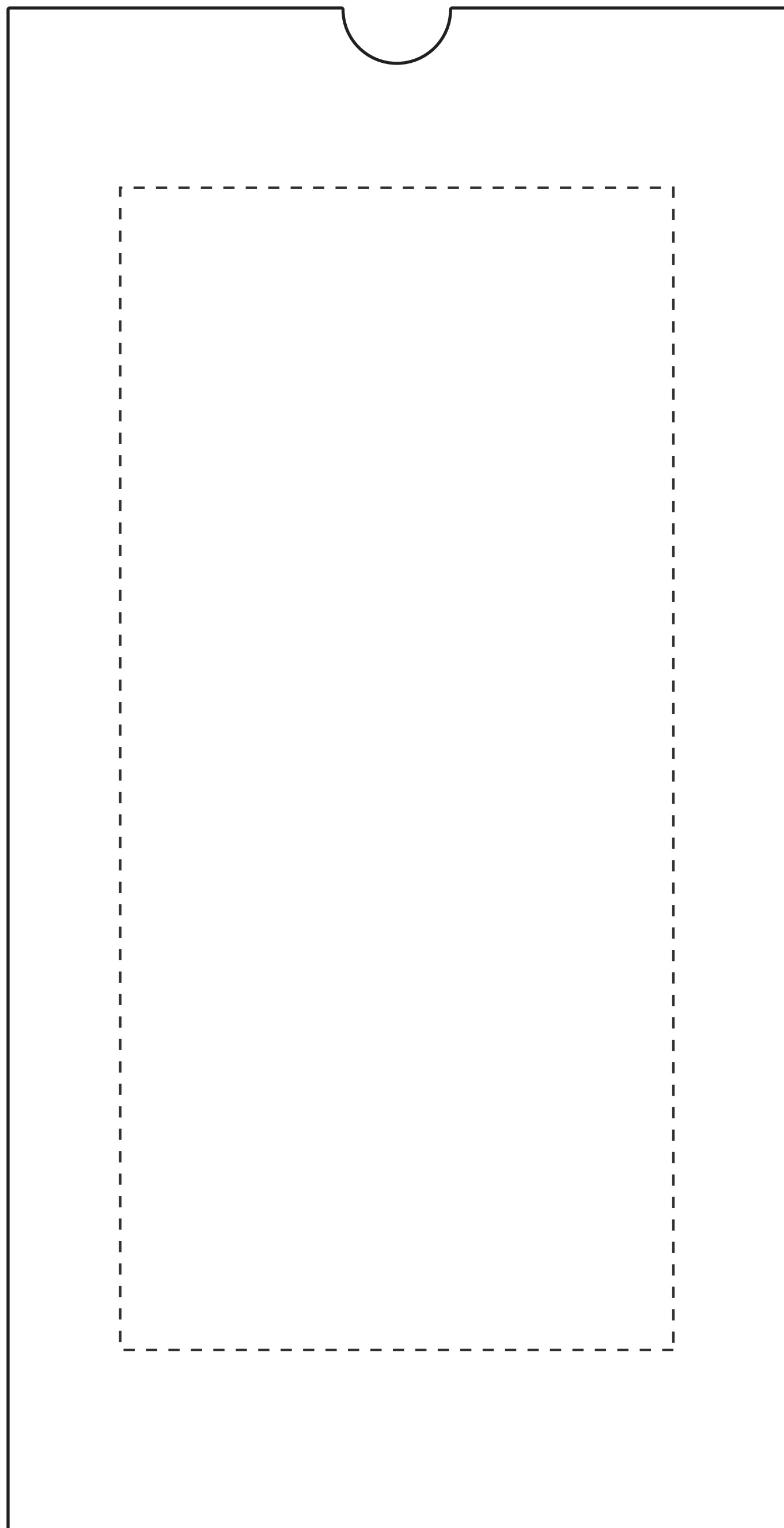
IMPRINT COLOR:

ITEM #: BRSP12

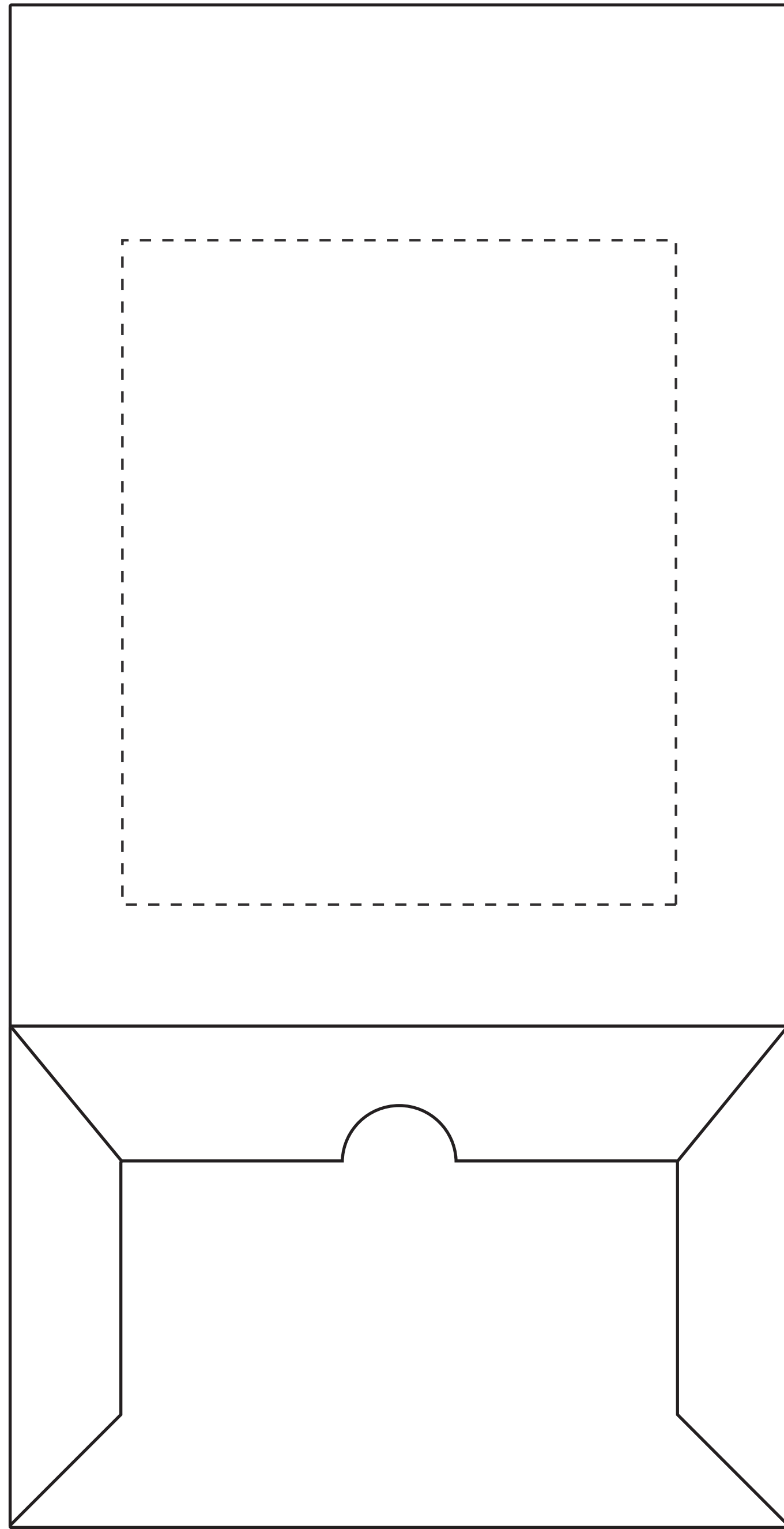
BAG SIZE: 7w x 4<sup>1/2</sup> x 13<sup>3/4</sup>h

IMPRINT AREA: 5w x 10<sup>1/2</sup>h (front)

5w x 6h (back)



**(Front)**



**(Back)**